

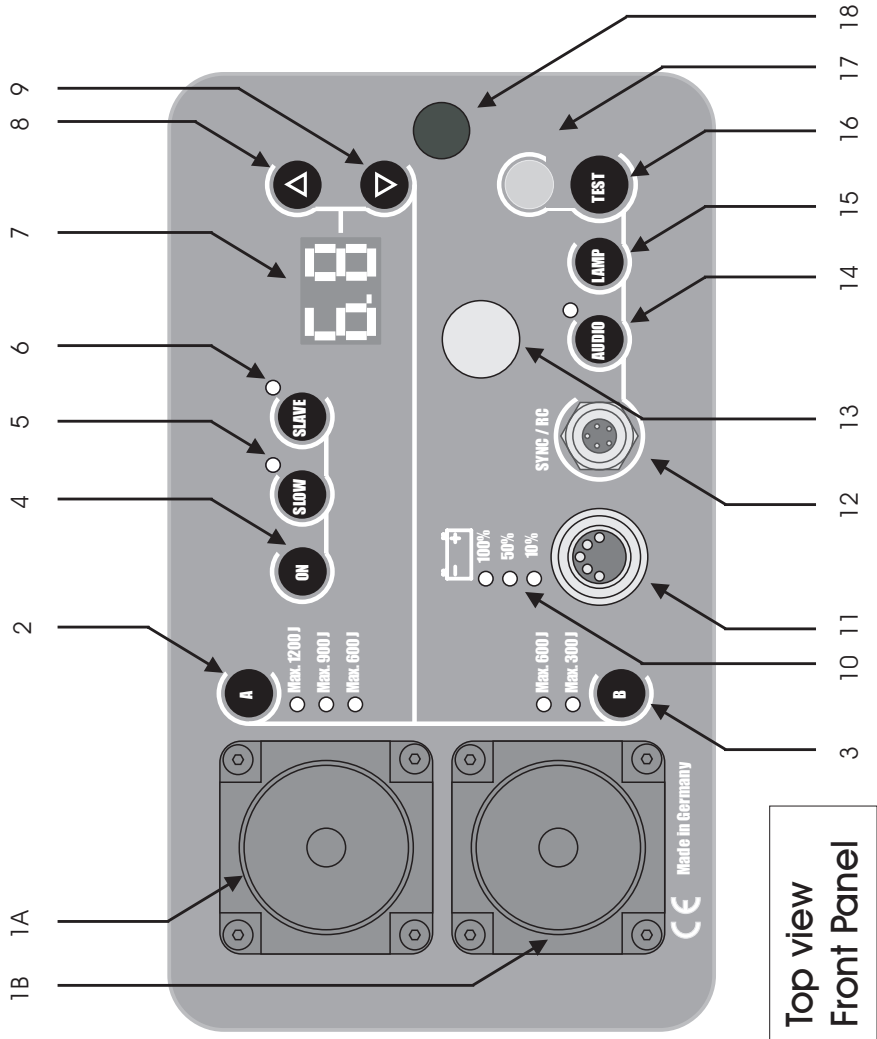
PORTY PREMIUM 1200 AS / RC

Power Pack
battery powered
radio controlled



User Manual

PORTY Premium 1200 AS / RC Power Pack, Code No. 4953

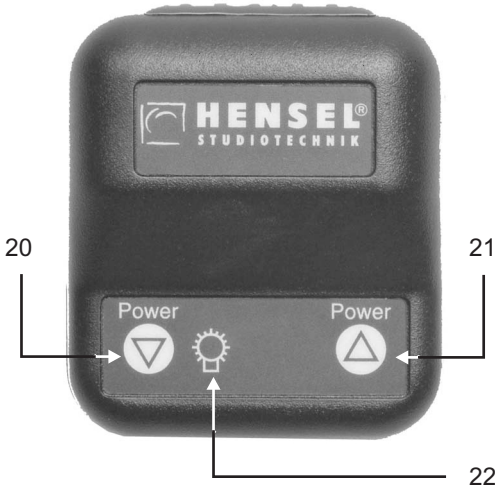


Top view
Front Panel

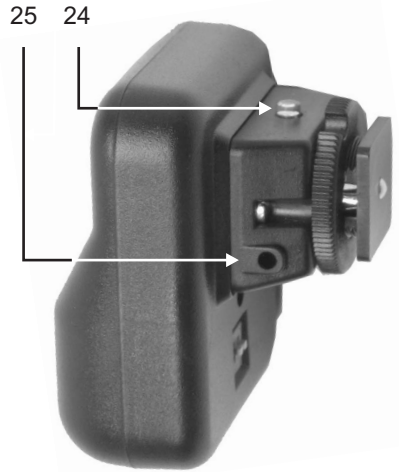
Side View
Channel Selector

HENSEL Radio Flash Trigger and Power Control System RC/RF-T

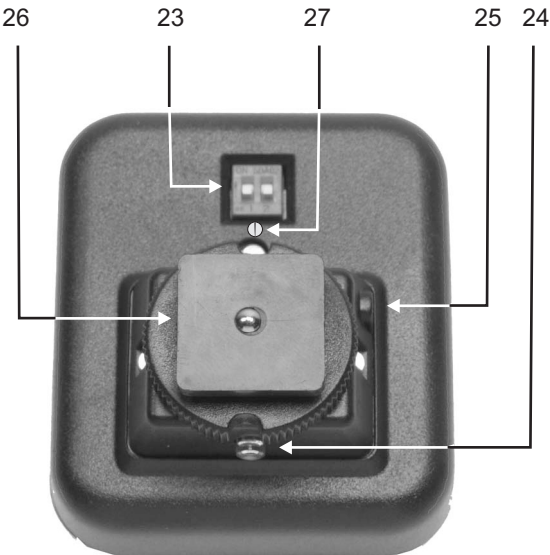
Operating Controls - Top View



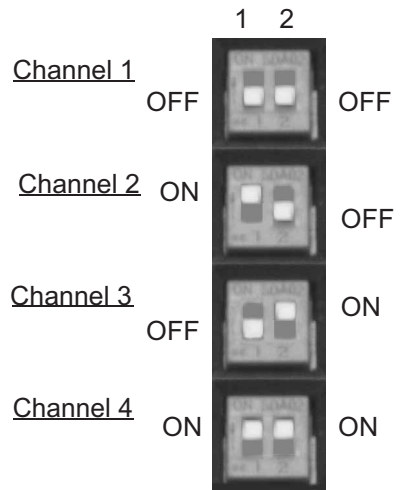
and Side View



Operating Controls - Back View



Channel Selection



1 Introduction

Dear Photographer,

in buying a HENSEL flash system, you have purchased powerful equipment of high quality.

So that you are able to successfully and productively work with this system for many years, we are giving you some advice on the use of this high tech product. Only by observance of the information given you secure your warranty, prevent damage and prolong the life of the equipment.

HENSEL Studiotechnik has taken great care to manufacture a secure and high quality flash system under inclusion and observance of all current regulations. Strict quality controls secure our quality requirements even in mass production. Please take your part in this and treat the equipment with due care - your reward will consist of excellent pictures.

If you should have any questions on the use, then feel free to ask us at any time.

We wish you success and „good light“.
HENSEL Studiotechnik

User Manual – Date of Revision: 2005-04

Technical data are subject to change. No guarantee for misprints. The listed values are guide values and should not be understood as binding in a legal sense. The values can differ due to tolerances in used components.

2 Table of contents

1	Introduction	3
2	Table of contents	4
3	General safety regulations.....	5
4	Description	6
5	Standard of delivery	7
6	Technical data.....	7
7	Overview of controls.....	8
8	Starting up.....	9
	Safety hints.....	9
	Acclimatizing	10
	Positioning.....	10
	Automatic overload circuit.....	10
	Lamp connections.....	11
	Number of flash heads connected.....	11
	Mechanical connection of lamp plugs	12
	Replacement of the battery pack drawer.....	12
	Charging of the battery pack.....	13
	Charging Unit Premium	13
9	Operation	
	<u>Operation Panel Power Pack</u>	14
	Turning ON and OFF	14
	Automatic shut-off time	14
	Charging LED indicator.....	14
	Synchronization	15
	Flash power control	16
	Readiness to flash.....	17
	Modeling lamp	17
	Audio	17
	Test flash.....	17
	Slow charging.....	17
	<u>Radio Control Unit RC/RF-T</u>	17
10	Maintenance	18
	Replacement of fuses	18
	Exchange of the battery pack	19
	Radio Control Unit RC/RF-T	19
	Regular check	19
	Return to customer service	20
11	Disposal.....	20
12	Accessories.....	20
13	Certificate of conformity	21
14	Customer service	22

3 General safety regulations

Power packs store electrical energy in capacitors by applying high voltages. These form a source of danger, which must be carefully excluded. Besides general rules on handling electrical appliances, the following safety measures must be observed. Therefore read and comply the safety hints (also see the paragraph *Starting up*) within the user manual before turning the appliance on.

Proper use

The present power pack is meant for studio use of professional photographers. Its task is to provide electrical energy for certain fixed types of HENSEL flash lamps.

The HENSEL Radio Flash Trigger and Power Control System RC/RF-T is used for triggering flashes and adjusting the flash power of specially HENSEL flash units with built-in receiver via radio signal.

Improper use

Power pack and radio control unit may not be used for any other purposes than that described above, especially not for other electrical appliances.

Contact with the capacitor voltage is perilous, and therefore opening of the case of PORTY power pack and repairs may only be made by authorized customer service.

Flashtubes must only be exchanged by authorized trained personal. Exchange of flashtube and modeling lamp must only be performed with the appliance turned off, unplugged from the mains and discharged.

Only lamp connectors with immaculate contacts must be used, burned or corroded contacts may cause explosions in the area of connectors and lamp sockets.

Do not route cables across the studio floor if possible, so that damage is excluded. If routing across the studio floor cannot be omitted, then it must be ensured that vehicles, ladders, etc do not damage cables. Damaged cables and cases must be immediately replaced by customer service.

Ventilation slots of power packs must be kept free during operation and sufficient air supply must be ensured. Do not stick any objects into ventilation slots, lamp sockets or synchronization sockets.

Do not deposit any objects (tools, coffee cups, etc.) on the power pack.

Flash systems must not be used in environments with explosion hazard. Flammable materials, like furnishing fabrics, paper, etc. must not be stored in the immediate vicinity of generators and flash lamps to prevent fire hazards.



PORTY power packs, radio control units, charging units and connected lamp heads must be protected against humidity and spray water.

Do not connect accessories from other manufacturers, even if they use the same or similar connectors.

Power packs - hanging from pantographs or ceiling - must be doubly secured against falling down.

Do not flash into eyes at short distances (smaller than 5 m), because this can lead to eye damage. Do not look directly into the flash reflector; the flash lamp could be triggered inadvertently.

Regularly air closed rooms to prevent build-up of inadmissible ozone concentrations, which can occur due to the use of high-powered flash systems.

During work in the studio generating much dust, the appliance must be covered with suitable dust protection (not during operation).

4 Description

PORTY Premium 1200 AS / RC Power Pack can be operated using a radio control unit (RC / RF-T) that is part of the scope of delivery. Up to 4 PORTY power packs can be independently controlled.

PORTY Premium 1200 AS / RC Power Pack has 1200 J stored energy digitally adjustable in 1/10 steps over a range of 6 f-stops. Power distribution is symmetrical or asymmetrical over the two flash sockets.

Especially for PORTY are available: PORTY EHT 1200 (Code No. 4991), PORTY Ringflash RF 120 P (Code No. 341) and Ringflash RF 1200 P XS (Code No. 3410) for connection to the flash sockets. It is also possible to connect additional flash heads from the HENSEL product range (*but note: no ability of modeling lamp*) using a special adapter cable (Code No. 578). About 250 flashes (100% power) and 5500 flashes (1/32 power), respectively, are provided by the supplied battery pack (modeling lamp turned OFF).

The battery pack can be charged using the charging unit Premium (Code No. 5671). Charging time of the battery pack Premium is about 3 hours. PORTY battery pack can be charged both, inside the power pack unit and outside the PORTY housing.

Flashes can be triggered by a special synchronization cable (Code No. 498) or by the built-in slave.

5 Standard delivery

PORTY Premium power pack comes with:

- 1 PORTY Premium 1200 AS power pack, Code No. 4953
- incl. 1 Battery pack 12V/12Ah,
- 1PORTY special synchronization cable,
- 1 Radio Flash Trigger and Power Control.

6 Technical Data*

Power pack series / Model type		PORTY Premium 1200 AS / RC	
Stored energy:		1200 J	
Aperture 100 ASA, t 1/60, 2 m distance, MaxiSoftRef.	100% power: 1/32 power:	f 64,2 f 11,2	
Flash duration in sec. t 0.1 (0.5), 100 % output adjustment	1 PORTY EHT 1200:	1/250	(1/1100)
No. of flashes per battery pack charge **	100% power: 1/32 power:	max 250 (SLOW Mode) max 150 (Normal Mode) max 5500 (SLOW Mode)	
Charging time in sec.	to 100% power: to 1/32 power:	2,7 0,5	
Power	Adjustment: Distribution: No. of flash sockets:	in 1/10 f steps 6 f adjustable symmetrical and asymmetrical 2	
Modeling lamp max:		100W / 12V Halogen	
Specification of battery pack:		12V/12Ah, rechargeable, no Memory effect	
Charging unit / time (h)	Premium:	3	
Fuses	Battery pack: Modeling lamp: Charge:	2 x 30 AM 10 AM 6,3 AM	
Weight (kg):	9		
Measurements of the housing in cm (LxWxH):	21 x 12,5 x 32		
Code No.:	4953		

*: Technical changes reserved.

** : Modeling light OFF.

Transmitter series / Model type	RC/RF-T
Battery:	CR 2 , Battery voltage 3V
Range:	> 40 m (12.2 feet) free visibility
Channels:	4 channels individually adjustable
Frequency:	433,92 Mhz
Sync current / Sync voltage for camera:	< 1mA for 5 μ s / 3V
Shutter time for synchronization:	1/250 sec
Weight:	53 g (1.87 oz.)
Dimensions (Width x Length x Height):	5.5 x 6.3 x 4.8 [cm] 2.2 x 2.5 x 1.9 [inch]
Recommended HENSEL flash units:	PORTY Premium 1200 AS / RC
Code No.:	390

This product conforms to the radio standards ETSI EN300220 und FCC15.231.

7 Overview of controls

Panel PORTY PREMIUM 1200 AS / RC

- 1 Flash sockets 1A and 1B
- 2 Power switch Channel A
- 3 Power switch Channel B
- 4 ON: Main switch ON / OFF
- 5 SLOW: Slow charging
- 6 Slave ON / OFF
- 7 Digital display
- 8 *Flash power / automatic shut-off time*: Increase button
- 9 *Flash power / automatic shut-off time*: Decrease button
- 10 Charging LED indicator
100% (green), 50% (yellow), 10% (red)
- 11 Charging socket
- 12 SYNC/RC: Synchronization socket
- 13 Slave
- 14 AUDIO: Audio ON / OFF
Acoustical signal for flash readiness
and automatic shut-off
- 15 LAMP: Modeling lamp
- 16 TEST: Manual flash release
- 17 Display for flash readiness (Ready Indicator)

- For operation with Radio Control Unit RC/RF-T:
- 18 Antenna
 - 19 Channel selector

Fuses of PORTY PREMIUM 1200 AS / RC

Bottom of the housing:

Fuse *modeling lamp* 10 AM

Fuse *internal charging* 6,3 AM

Battery Pack Drawer:

Main Fuse2 x 30 AM

Fuse *external charging* 6,3 AM

**Radio Flash Trigger / Power Control System
RC/RF-T**

- 20 Flash power decrease button
- 21 Flash power increase button
- 22 Modeling Lamp ON/OFF switch
- 23 Channel selector for 4 channels
- 24 TEST: Manual flash release
- 25 SYNC/RC: Synchronization socket
- 26 Locking screw for mounting
to the Hot Shoe of the camera
- 27 Screw for opening the battery compartment

8 Starting up

Safety hints for operation with connected flash heads

To avoid damage to the flashtube mount reflectors and lightformers (softboxes etc.) before use and turning on the unit. Do not move power packs and lamp heads around, while they are operating. Turn off the appliance for each change of reflectors or to move the unit to another location.

Caution: Reflectors, speedrings and other accessories heat up during longer operation. To avoid injuries, handle with isolating cloth or wait, till parts cooled down.

A damaged flashtube is extremely dangerous because the electrically charged electrodes are exposed and could be touched. In case of a damaged flashtube, the flash head has to be unplugged from the generator immediately and sent to an authorized HENSEL service department.



Do not only turn off the flash head, because the capacitors inside the generator may be still charged and dangerous high voltage can be still present at the damaged flashtube electrodes. For replacement of flashtubes please consult your local HENSEL agency.

Assembly

When mounting to a ceiling system or a pantograph, suspended flash heads have to be doubly secured from falling down or dropping. This is done by tightening the safety screw at the HENSEL tilting head or U-bracket. Due to the existing safety regulations, it is, however, necessary to use a safety rope (Code No. 769) for further security.

The safety rope has to be led through the handle or the U-bracket of the flash head and then secured by looping through the bracket of the pantograph or the eyelet of the carriage.

Heating

Due to the modeling and flash light, each generator and flash head emits heat. This can heat up the parts of the unit to a dangerous level. Therefore make sure, that generators and lamp heads are located far enough from inflammable props to avoid inflaming them. Take care for sufficient air supply and make sure that ventilation slots of generators and flash heads are kept free.

Do not operate power packs and flash heads unattended.

Acclimatizing

When moving generator from one climatic zone to the next, the appliance should stand in the room, in which it will be operated, for some time before starting it up. This prevents internal shortcuts caused by eventually condensing water.

Positioning

PORTY power packs can be operated standing up or lying down.

Automatic overload circuit

Large series of subsequent flashes may trigger the automatic overload circuit. After a break of cooling down, the power pack is ready again for operation. The Ready Indicator **17** flashes up.

Lamp connections

PORTY EHT 1200 Heads (Code No. 4991)

1 A, 1B

These flash heads are specially designed for operation with the PORTY power pack. The flash head cable is to be connected to flash socket **1A or 1B** of the PORTY power pack. Flash head extension cables, length 3 m, with round sockets can be ordered (Code No. 579). The flash head is fitted with a modeling lamp 100W/12V Halogen.

Ringflash RF 120 P (Code No. 341) and

Ringflash RF 1200 P XS (Code No. 3410)

1 A, 1B

Special version only for operation with PORTY power pack. For connection to the power pack the flash head cable has to be plugged in one of the both flash sockets **1A or 1B**. For synchronization the ring flash can be connected via its 3,5 mm socket directly to the camera. The ring flash hasn't any modeling lamp.

Additional HENSEL flash heads

HENSEL flash heads fitted with a 20-way-plug do also work with PORTY power pack. For connection to the power pack a special adapter cable (Code No. 578) can be ordered. In this case the modeling light is not available.

Accessories

For the connected flash heads the wide HENSEL accessory range of series EHT/CONTRA (adapter diameter 10 cm) is available.

Third party manufacturers

Even through similar lamp sockets and plugs are used by other manufactures as well, lamps and flash heads from these manufactures may **not** be connected to the PORTY power pack. This requires in every case an adapter cord. Ask your HENSEL agent about suitable adapter cords for your brand.

Number of flash heads connected

The maximum load capacity of the generator may not be exceeded. Only 2 flash heads may be simultaneously connected.

4:
OFF

Mechanical connection of lamp plugs

Before connecting lamp plugs, turn off the power pack using main switch **4**.

Only use flawless plugs and sockets.

Plugging or unplugging of flash plugs must only be done with power pack switched off.

Unused sockets must be covered with locking caps

Insert lamp plugs into the flash sockets **1A** or **1B** and then safely lock them using the cap screw. To remove the plug, complete unscrew the cap screw and pull the plug upwards.

1 A, 1B

Replacement of the battery pack drawer

Hints to PORTY battery pack

There are, of course, also available battery packs of the same construction on the market – but these, however, do not necessarily show the same technical data like the original version of the HENSEL battery pack! Therefore, our HENSEL PORTY item should only be operated with the original HENSEL battery packs.

Battery packs contain substances that are corrosive and injurious to health, therefore the safety hints printed on the battery pack must be observed.

To prevent any damage to the battery pack avoid over-discharging. Therefore the battery pack must be recharged, when the charging indicator **10** signals only a charge of 10% or the battery pack was not in operation for over 6 month.

When working with the PORTY at low temperatures the battery pack should be stored in a warm room before to achieve a higher power output.

The battery pack should no longer be connected to the charging unit than 24 hours.

Removing the battery pack drawer

1. Switch off the unit using the main switch **4**.
2. Press down the push-button (PUSH) of the battery pack drawer and remove the drawer by means of the swivelling handle.

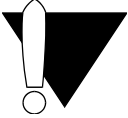
Inserting the battery pack drawer

Insert the battery pack drawer into the unit until it completely clicked into place.



10:
Charging Indicator

4:
OFF



Charging of the battery pack

The battery pack can be charged inside the PORTY Premium housing or outside (e.g. spare battery packs) using the HENSEL charging unit Porty Premium (Code 5671).

Please note the separate operating instructions enclosed to the charging unit. Please take from this detailed information concerning mains and charging indication.

Premium Charger	
Code No.:	5671
Charging time:	3 h
Input voltage:	90 VAC ... 260 VAC automatic switch over

Premium Charger

The charging unit may only be connected to mains outlets with ground connection.

Internal charging

Plug the charging plug of the Premium Charger into the charging socket **11** of the PORTY power pack. Then connect the mains plug of the Premium Charger to the mains.

External charging of the battery pack (within the drawer)

Insert the charging plug of the Premium Charger into the charging socket on the back of the battery pack drawer (see above: *Removing the battery pack drawer*). Then connect the mains plug of the Premium Charger to the mains.

11: Charging socket

9 Operation

In the following you find a detailed description of all features available for the PORTY power pack using the operation panel. Alternatively you can control most of the functions of the PORTY power pack using the radio control unit RC/RF-T. For detailed information on its use please refer to page 17.

Operation Panel Power Pack

Turning ON and OFF

By pressing button **4** PORTY power pack is switched on and off. After turning on the unit and first charging of the capacitors the charging indicator **10** flashes. When the green ready indicator **17** lights up, the PORTY power pack is ready to flash.

4:
ON/OFF

10, 17

Automatic shut-off time

To protect the battery pack the PORTY unit turns off automatically after a predefined period of time.

Setting the automatic shut-off time

Press the two direction buttons **8** and **9** simultaneously. Then the automatic shut-off time can be set. A range of 0 - 60 min. is adjustable shown on the digital display **7** (disregard the decimal point, e.g. 0.2 means 2 min. shut-off time). Switching off automatically is signalled by a tone (3x) when AUDIO is switched on.

To disable the automatic shut-off, set the display **7** to „-.-“. After about 2 sec. the display switches to the display of f-stop values automatically.

7, 8, 9:



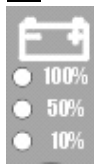
Charging LED indicator

Due to the system, the charging LED indicator **10** of the battery pack can only be an approximate indication.

The capacity, that means the number of flashes, which can be taken, depends upon numerous factors, e.g. status of charging, temperature, age of the battery pack, etc. Completely new battery packs only achieve full capacity after approx. 3 to 5 charges.

The remaining capacity (remaining number of flashes) can only be charged with loaded battery packs, that means, as long as the PORTY is charging. During the charging time (Ready indication lamp **17** OFF) the battery pack indication display is not meaningful. As soon as the Ready indication lamp **17** lights up, measurement has been finished and the battery pack indication shows the present status of charging of the battery pack.

10:



17

12:
SYNC/RC

Synchronization (flash triggering)

Synchronization by cable

The PORTY Head can be connected via the synchronisation socket **12** to the camera using the provided synchronization cable.

The synchronization circuit is made up of state-of-the-art semiconductor technology and enables secure triggering of the flash even with older cameras with mechanical contacts.

Due to the many different electronic circuits in cameras for controlling synchronization, we cannot take any liability for possible damage to cameras triggering flashes. Please contact the camera manufacturer before using an unusual camera.

13

Synchronization by slave

The built-in slave **13** can trigger the power pack. Triggering is done by an „incoming“ flash, which was emitted by another flashlight. This mode of operation is switched on using switch **6** and indicated by the green lamp of the control-LED.

The slave is an impulse photocell. It can only operate, when the triggering flash has a higher f-stop than the ambient light. Please be aware that the ambient light that strikes the slave may never be too strong. If this cannot be avoided, please switch off the slave by pressing switch **6** and release the flash by cable or IR.

6:
SLAVE

16:
TEST

Manual flash triggering

By pressing button **16** test flashes can be released.

RC/RF-T



Flash triggering using the Radio Control Unit RC/RF-T

See information on pp. 17-18.

IR SPEED



Synchronization by connected flash heads

The **EHT PORTY Heads** offer additional flash release options, e.g. remote-controlled triggering using the IR triggering system „SPEED“ (Code No. 392 or 393, 394).

Flash power control

Operation of the battery powered flash unit is possible in symmetrical and asymmetrical mode.

Power control of channel A:

2
8, 9
 By pressing button **2** the LED *Max 1200 J* lights up. After repeated pressing the LED indicator lamp goes off and the flash head is switched off. As shown in the table below the power of the switched-on flash head can be adjusted within a range from 1200 J to 37 J using the up and down buttons **8** and **9**.

5.0 means	37 J	8.0 means	300 J
6.0 means	75 J	9.0 means	600 J
7.0 means	150 J	10 means	1200 J

7
 Display **7** shows the values from 10 to 5.0 in 1/10 f-stops.

Power control of channel B:

3
 Repeated pressing of button **3** switches the connected flash head off or on with the options of 600 J or 300 J for maximum power output.

8, 9
 If the power output *Max 600 J* is selected, the power can be adjusted from 600 J (Display: 9.0) to 37 J (Display: 5.0) using the up and down buttons **8** and **9**.

If the power output *Max 300 J* is selected, the power can be adjusted from 300 J (Display: 8.0) to 37 J (Display: 5.0) using the down button **9** and from 37 J to 600 J using the up button **8**.

Power control with flash heads connected to channel A and B: Symmetrical operation

3
8, 9
 Repeated pressing of button **3** sets channel B on 600 J and then channel B on the same value. The flash power is symmetrically distributed to both flash heads connected and can be adjusted using buttons **8** and **9** from 600 J (Display: 9.0) to 37 J (Display: 5.0) for each flash head.

Power control with flash heads connected to channel A and B: Asymmetrical operation

2, 3
 By repeated pressing of the buttons **2** und **3** the following power distribution can be selected:

Option1	A = 900 J	B = 300 J	Display 10-6,7
Option2	A = 600 J	B = 300 J	Display 9,6-6,3

8, 9
 For both options the power can be adjusted from its maximum down to 37 J for each flash head using buttons **8** and **9**.

17, 14

Readiness to flash

Readiness to flash is signalled by green light of the Ready control lamp **17** acoustical signal when AUDIO is switched ON (green light of the control lamp of switch **14**)

**15:
LAMP**

Modeling lamp

The modeling lamp of the connected EH 1200C PORTY flash head (main switch of the head to „HEAD ON“) is switched on by pressing button **15**. After about 15s the modeling lamp turned automatically off to prevent the battery pack.

Maximum 100W modeling light is to be used. Are 2 flash heads connected, maximum 50W each.

**14:
AUDIO**

Audio

An acoustical signal that can be turned on or off by pressing switch **14** indicates:

Readiness to flash after charging (1x)

Automatic shut-off (3x)

**16:
TEST**

Test flash

By pressing button **16** test flashes can be released.

17

The green light of the LED control lamp **17** signals readiness to flash.

**5:
SLOW**

Slow charging

By pressing button **5** the charging time can be doubled. This provides more flashes per accumulator charge.

Radio Control Unit RC/RF-T

Connection

Der RC/RF-T has no built-in main switch for switching the unit ON. The transmitter is to be connected to the camera either by attaching to its Hot Shoe or by connecting the synchronization cable to the sync socket **25**. If it is connected to the Hot Shoe the unit must be carefully tightened using locking screw **26**.

Channel selection

Using the sliding switch **23** at the bottom side of the unit the working channel can be set. The combination for setting of both sliding switches offers four different options. The same channel must be set at the corresponding receiver **19**. Ex works channel 1 is pre-adjusted. For selection of a different channel, please use a screwdriver.



Test flash

The flash can be triggered by pressing the TEST button **24** or by releasing the camera shutter.

Power adjustment

The buttons **20** and **21** allow further options for the power adjustment of HENSEL flash units with a built-in receiver (PORTY Premium). A single click of the respective button reduces (**20**) and increases (**21**) the flash power by 1/10 f-stop.

Modeling Lamp

Is button **22** pressed for longer than 3 sec. the modeling light switches automatically On and Off, resp. During operation with PORTY Premium the modeling lamp can only be switched ON, because it is automatically switched Off after 15 sec.

10 Maintenance

PORTY Premium Power Pack

PORTY Premium power pack is in need of little maintenance by the user. The unit should be dry cleaned from dust from time to time. Before cleaning switch the unit off and separate the unit from the charging unit.



Caution:

Under no circumstances is any part of the equipment to be opened. The equipment is not user serviceable and there is dangerous high voltage. In the event of difficulty notify your dealer.

Replacement of fuses

PORTY Premium power pack is secured by the main fuse, fuse for modeling lamp and two fuses for charge (internal and external charging).

In case of a broken fuse replace fuses only, when the unit is switched off and separated from lamp heads and charging units.



Attention:

*Never repair or bridge fuses.
Only use the following types of fuses:*

Bottom of the housing:

Fuse *modeling lamp* 10 AM

Fuse *internal charging* 6,3 AM

Battery Pack Drawer:

Main Fuse (lateral) 2 x 30 AM

Fuse *external charging* (bottom side) 6,3 AM

Exchange of the battery pack

In case of a damaged battery pack, it can be put out of the drawer and replaced by a new one. The exchange of the battery pack is user serviceable. Please read and comply carefully the following instructions:

1. Remove 4 screws on the upper side
2. Take away the cover (please note the location of the cables)
3. Remove the battery pack from the drawer and loosen the connector from the drawer
4. Insert the new battery pack and plug in the connector into the drawer.
5. Please arrange for the cables so that they won't crossover
6. Put on the cover (don't forget the handle) and fix the screws.

Radio Control Unit RC/RF-T

The HENSEL Transmitter RC/RF-T is almost maintenance-free. Because of the low energy consumption a battery lifetime of 1 to 2 years can be assumed depending on the degree of utilization. The battery can be exchanged by revolving the screw **27** at the bottom of the unit. This provides access to the electronics and the battery can be removed from the clips and exchanged. Before reinstallation of the new battery the polarity must be observed. The positive pole should be pointed at that side of the unit where the Power Down **20** button is located.

Regular check

National safety regulations require regular inspection and maintenance of electrical systems and appliances. Power packs and accessories must be regularly checked for safe operation. Yearly inspection of the appliances serves the safety of the user and protects your investment in the system.

Return to customer service

To achieve a maximum protection of the unit sending it in for service, the original packaging should be kept.

11 Disposal



Packaging of the power pack has to be separately disposed of and recycled.

Worn out and broken appliances has to be disposed off by electronics recycling.

12 Accessories

Accessory available for PORTY Premium Power Pack AS/RC:

- Battery Pack 12V/12 Ah, only Code No. 4791
- Drawer with Battery Pack 12V/12Ah Code No. 1497
- Drawer, only Code No. 2497
- Battery Charging Unit Premium Code No. 5671
- PORTY EHT 1200 Flash Head Code No. 4991
- Ringflash RF 1200 P XS Code No. 3410
- Ringflash RF 120 P Code No. 341
- Flash Head Extension Cable Code No. 579
- PORTY Special Sync Cord Code No. 498
- Adapter Cable
(required for use of flash heads,
except EHT PORTY) Code No. 578
- Reflectors and Softboxes
(Adapter Ø for accessories 10 cm)
- Umbrellas
- Radio Flash Trigger and
Power Control System RC-RF/T Code No. 390

13 Certificate of Conformity for Electromagnetic Compatibility and Safety

Manufacturer and
Owner of Certification: HENSEL Studiotechnik GmbH & Co.KG
Robert-Bunsen-Str. 3
97076 Würzburg
Germany

Test Report: of May 24, 2004

Products: **PORTY Premium 1200 AS / RC Power Pack**

Description: Emission and Interference Resistance

Directives: EN 50 081-1 / EN 55 014 / EN 60 555 /
EN 50 082-2 / EN 61 000-4-2/3/4/5
EN 60491:95 / EN 60598-1:93+A1:96 / EN 60598-2-9:89

This certificate of conformity is made by the above mentioned manufacturer according to article 10, paragraph 1, of the Councils Directive of March 3rd 1989 referring to electromagnetic compatibility and safety for bringing the statutory instruments of the Member States into lines with each other. This certificate does not make any statement according to requirements of other provisions concerning the electromagnetic compatibility and safety.

Description: Low Voltage Directive

Directives: EN 60491:95 / EN 60598-1:93+A1:96 /
EN 60598-2-9:89

This certificate of conformity is made by the above mentioned manufacturer according to article 10, paragraph 1, of the Councils Directive of February 19th 1973 referring to electrical items for usage within specified voltage limits (72/23/EWG).

This certificate of conformity is the result of testing samples of the above listed products submitted, in accordance with the provisions of the relevant specific standards.

Date: May 24, 2004

Manufacturer



J. Renschke
- Managing Director -
HENSEL Studiotechnik GmbH & Co.KG

14 Customer Service

Works customer service

with 24 hours express service:

HENSEL Studioteknik GmbH & Co. KG
GERMANY

- service department -
Robert-Bunsen-Str. 3
D-97076 Würzburg

Phone: +49(0)931/27881-0
Fax: +49(0)931/27881-50

Internet: www.hensel.de
E-mail: info@hensel.de